

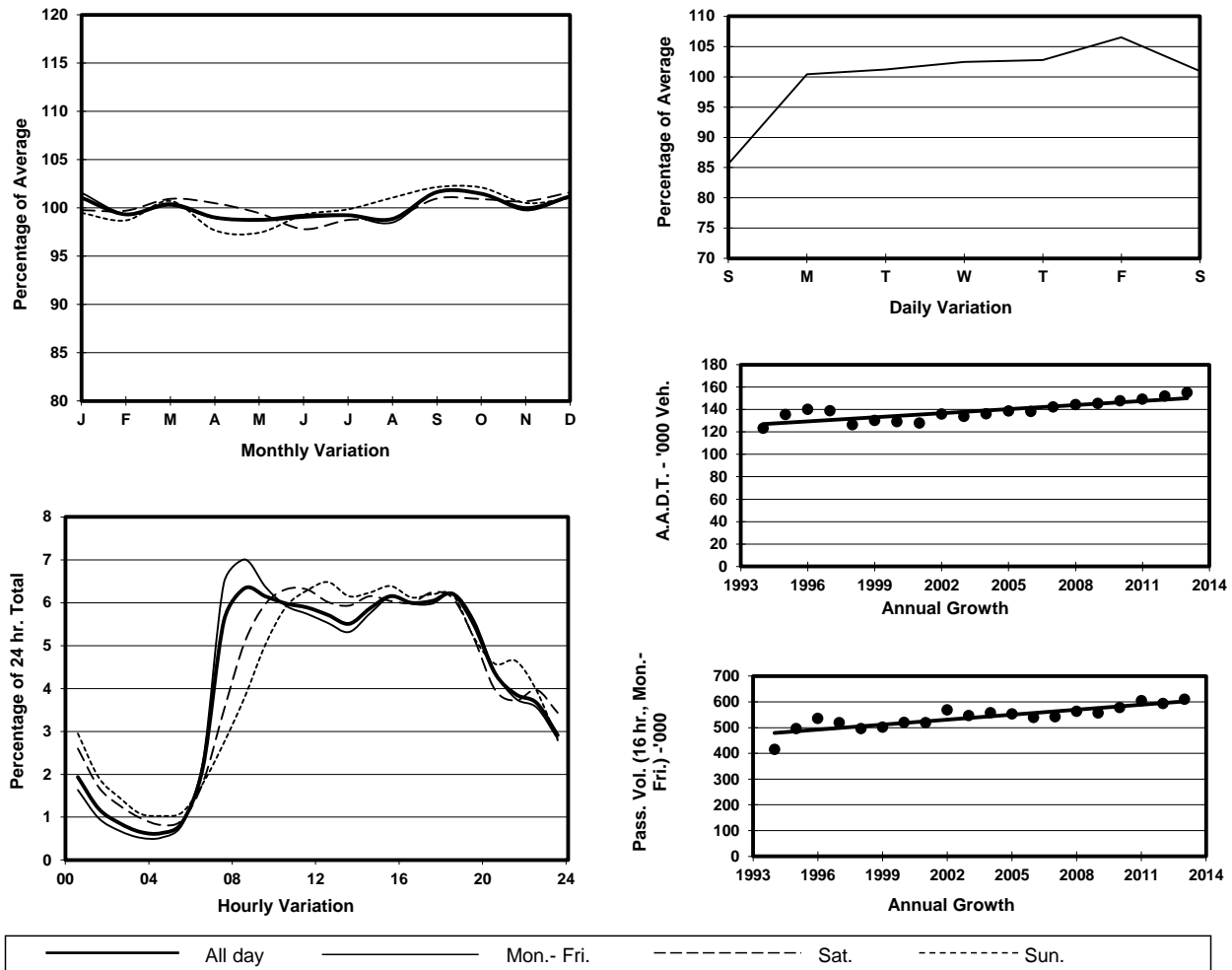
YEAR 2013

Location Hong Kong External Cordon(Boundary between the Northern Part and Southern Part of Hong Kong Island)

Stations on Cordon/Screenline

1004, 1021, 2201, 2202, 2206, 2401 and 2407

## 1. TRAFFIC FLOW VARIATION AND GROWTH



## 2. TRAFFIC CHARACTERISTICS (BY DIRECTION)

Parameter	All - Day	Mon. - Fri.	Sat.	Sun.
<b>SOUTH BOUND</b>				
A.A.D.T.	75800	78390	76910	65950
R 12 / 24 - %	69.5	70.2	68.2	66.4
R 16 / 24 - %	88	88.9	85.5	85.1
AM Peak Hour	0900-1000	0900-1000	0900-1000	0900-1000
One-way flow at AM peak hour	4630	4980	4490	3280
T - % (AM)	-	11.5	-	-
PM Peak Hour	1800-1900	1800-1900	1600-1700	1600-1700
One-way flow at PM peak hour	4550	4810	4790	4140
T - % (PM)	-	8.6	-	-
Prop.of commercial vehicles - 16 hr.	-	10.5	-	-
<b>NORTH BOUND</b>				
A.A.D.T.	79200	82060	80720	67750
R 12 / 24 - %	73.3	74.5	71	68.6
R 16 / 24 - %	89.5	90.4	87.3	86.6
AM Peak Hour	0800-0900	0800-0900	0900-1000	0900-1000
One-way flow at AM peak hour	5440	6340	4930	3460
T - % (AM)	-	10.4	-	-
PM Peak Hour	1700-1800	1700-1800	1700-1800	1800-1900
One-way flow at PM peak hour	5100	5240	5230	4640
T - % (PM)	-	11.9	-	-
Prop.of commercial vehicles - 16 hr.	-	10.1	-	-

## 3. OTHER INFORMATION AND COMMENT

**Hong Kong External Cordon**  
**Year 2013**

**4. Vehicle classification and occupancy - Monday to Friday**

Time		Class of vehicle									
		Motor Cycle	Private Car	Taxi	Private LB	PLB	Goods veh.		Non Fr. Bus	Fr. Bus	
							Light	M & H		SD	DD
0700-0800	Pro	4.5	40.8	23.7	3.1	5.9	7.8	1.8	7.2	0.4	4.8
	Ocp	1.1	1.5	2.1	8.0	13.0	1.6	1.2	17.4	24.8	56.8
0800-0900 Peak Hour	Pro	2.9	53.7	18.1	1.9	4.2	8.8	1.5	4.5	0.3	4.0
	Ocp	1.1	1.4	2.0	4.7	14.2	1.8	1.3	14.8	23.8	66.5
0900-1000	Pro	2.6	45.6	22.0	1.4	4.2	14.1	2.8	2.7	0.2	4.4
	Ocp	1.1	1.4	2.0	3.1	11.9	1.7	1.4	15.0	14.3	32.6
1000-1100	Pro	2.0	40.3	23.6	1.4	4.0	18.1	3.7	2.4	0.3	4.2
	Ocp	1.1	1.4	2.1	3.1	10.5	1.6	1.5	12.6	12.8	23.8
1100-1200	Pro	1.9	44.5	19.3	2.1	3.7	17.9	3.1	3.3	0.3	3.9
	Ocp	1.0	1.5	2.2	3.2	10.1	1.6	1.5	11.4	12.6	22.6
1200-1300	Pro	2.4	45.8	21.0	2.2	3.7	15.7	3.1	2.3	0.3	3.5
	Ocp	1.0	1.4	2.1	3.8	11.7	1.6	1.4	14.8	13.1	23.3
1300-1400	Pro	2.3	41.6	21.9	1.5	4.6	17.5	3.9	2.4	0.4	4.0
	Ocp	1.1	1.5	2.2	3.6	10.9	1.6	1.4	9.7	11.3	26.1
1400-1500	Pro	1.9	43.8	20.6	1.7	4.7	16.9	3.1	3.6	0.3	3.4
	Ocp	1.1	1.5	2.2	3.4	9.7	1.7	1.4	14.9	15.2	23.1
1500-1600	Pro	2.0	45.2	20.7	2.4	4.0	14.5	2.8	4.3	0.3	3.8
	Ocp	1.1	1.5	2.2	6.9	11.9	1.6	1.3	20.0	17.0	28.9
1600-1700	Pro	2.5	46.4	19.6	2.8	3.7	12.8	2.9	4.8	0.3	4.1
	Ocp	1.1	1.6	2.1	4.0	12.1	1.7	1.4	9.9	17.6	37.6
1700-1800	Pro	4.7	49.4	19.0	1.3	4.5	10.1	1.9	4.2	0.3	4.5
	Ocp	1.1	1.5	2.3	2.7	12.9	1.7	1.3	16.9	21.0	48.9
1800-1900	Pro	3.7	50.9	24.0	0.7	5.4	5.3	1.0	4.4	0.3	4.3
	Ocp	1.1	1.5	2.3	2.6	14.4	1.6	1.6	19.7	23.0	63.5
1900-2000	Pro	2.7	53.2	28.1	0.1	4.0	4.7	0.4	2.6	0.3	4.0
	Ocp	1.1	1.4	2.2	1.0	14.0	1.6	1.0	15.7	18.6	45.0
2000-2100	Pro	1.7	46.0	35.2	0.1	5.1	3.5	0.6	2.0	0.3	5.5
	Ocp	1.1	1.5	1.9	2.5	11.9	1.5	1.3	8.1	11.3	29.4
2100-2200	Pro	2.4	43.7	38.0	0.3	6.7	2.0	0.7	0.8	0.4	5.0
	Ocp	1.3	1.5	2.1	3.4	10.1	1.5	1.6	12.9	11.3	27.3
2200-2300	Pro	3.2	42.5	37.4	0.1	6.2	2.8	0.8	0.7	0.3	5.9
	Ocp	1.0	1.5	1.8	1.0	10.2	1.6	1.3	6.7	8.2	27.2
16 hours	Pro	2.7	46.1	23.6	1.5	4.6	11.2	2.2	3.5	0.3	4.3
	Ocp	1.1	1.5	2.1	4.5	12.0	1.6	1.4	15.1	16.7	37.9

**Legend**

- Pro.** Proportion of vehicles in % (Sum may not add up to 100% due to figure rounding)  
**Ocp.** Average occupancy of vehicles  
**M & H** Medium and Heavy